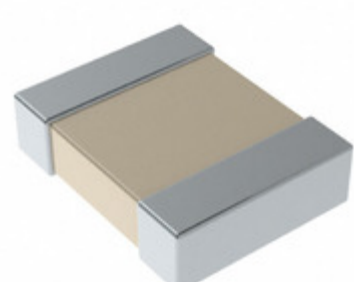


C1210X333M4HACAUTO



Part Number: [C1210X333M4HACAUTO](#)
Manufacturer: [KEMET](#)
Description: CAP CER 1210 33NF 16V ULTRA STAB
Data sheet: [FT-CAP, Ultra Stable, X8R Dielectric](#)

RoHS Status: Lead free / RoHS Compliant
Ship From: Hong Kong
Shipment Way: DHL/Fedex/TNT/UPS/EMS

Images are for reference only.
 See Product Specifications for product details.
Buy C1210X333M4HACAUTO with confidence from Component-World.HK, 1 Year Warranty

[Request For Quotation](#)

PRODUCT PARAMETER

Part Number	C1210X333M4HACAUTO	Manufacturer	KEMET	
Description	CAP CER 1210 33NF 16V ULTRA STAB	Lead Free Status / RoHS Status	Lead free / RoHS Compliant	
Quantity Available	353161 pcs	Data sheet	FT-CAP, Ultra Stable, X8R Dielectric	
Category	Capacitors	Voltage - Rated	16V	
Tolerance	±20%	Thickness (Max)	0.039" (0.98mm)	
Temperature Coefficient	X8R	Size / Dimension	0.130" L x 0.102" W (3.30mm x 2.60mm)	
Series	FT-CAP	Ratings	AEC-Q200	
Packaging	Tape & Reel (TR)	Package / Case	1210 (3225 Metric)	
Operating Temperature	-55°C ~ 150°C	Mounting Type	Surface Mount, MLCC	
Moisture Sensitivity Level (MSL)	1 (Unlimited)	Manufacturer Standard Lead Time	36 Weeks	
Lead Style	-	Lead Spacing	-	
Lead Free Status / RoHS Status	Lead free / RoHS Compliant	Height - Seated (Max)	-	
Features	Low ESL, Soft Termination	Failure Rate	-	
Detailed Description	0.033µF ±20% 16V Ceramic Capacitor X8R 1210 (3225 Metric)		Capacitance	0.033µF
Applications	Automotive, Boardflex Sensitive			

Component-World.com is a Reliable Stocking Distributor of Electronic Components. We specialize in all KEMET series electronic components. We have 353161 pieces of KEMET C1210X333M4HACAUTO in stock available now. Request a quote from electronics components distributor at Component-World.com, our sales team will contact you within 24 hours.
 RFQ Email: info@Components-World.com

RELATED PRODUCTS

	Part#: C1210X333M8HACAUTO Description: CAP CER 1210 33NF 10V ULTRA STAB	Manufacturers: KEMET	RFQ
	Part#: C1210X333K8JACAUTO Description: CAP CER 0.033UF 10V U2J 1210	Manufacturers: KEMET	RFQ
	Part#: C1210X333M8HAC7800 Description: CAP CER 1210 33NF 10V ULTRA STAB	Manufacturers: KEMET	RFQ
	Part#: C1210X333M5JAC7800 Description: CAP CER 0.033UF 50V U2J 1210	Manufacturers: KEMET	RFQ
	Part#: C1210X333K8JAC7800 Description: CAP CER 0.033UF 10V U2J 1210	Manufacturers: KEMET	RFQ
	Part#: C1210X333M8JAC7800 Description: CAP CER 0.033UF 10V U2J 1210	Manufacturers: KEMET	RFQ
	Part#: C1210X333M4HAC7800 Description: CAP CER 1210 33NF 16V ULTRA STAB	Manufacturers: KEMET	RFQ
	Part#: C1210X333M5JACAUTO Description: CAP CER 0.033UF 50V U2J 1210	Manufacturers: KEMET	RFQ
	Part#: C1210X333M3JACAUTO Description: CAP CER 0.033UF 25V U2J 1210	Manufacturers: KEMET	RFQ
	Part#: C1210X333KFRACTU Description: CAP CER 0.033UF 1.5KV X7R 1210	Manufacturers: KEMET	RFQ
	Part#: C1210X333M8JACAUTO Description: CAP CER 0.033UF 10V U2J 1210	Manufacturers: KEMET	RFQ
	Part#: C1210X333K8HAC7800 Description: CAP CER 1210 33NF 10V ULTRA STAB	Manufacturers: KEMET	RFQ
	Part#: C1210X334F3JAC7800 Description: CAP CER 0.33UF 25V U2J 1210	Manufacturers: KEMET	RFQ
	Part#: C1210X333K8HACAUTO Description: CAP CER 1210 33NF 10V ULTRA STAB	Manufacturers: KEMET	RFQ
	Part#: C1210X333M3JAC7800 Description: CAP CER 0.033UF 25V U2J 1210	Manufacturers: KEMET	RFQ
	Part#: C1210X333KDRACTU Description: CAP CER 0.033UF 1KV X7R 1210	Manufacturers: KEMET	RFQ
	Part#: C1210X333M4JACAUTO Description: CAP CER 0.033UF 16V U2J 1210	Manufacturers: KEMET	RFQ
	Part#: C1210X334F3JACAUTO Description: CAP CER 0.33UF 25V U2J 1210	Manufacturers: KEMET	RFQ
	Part#: C1210X333M4JAC7800 Description: CAP CER 0.033UF 16V U2J 1210	Manufacturers: KEMET	RFQ
	Part#: C1210X333KFRACAUTO Description: CAP CER 1210 33NF 1500V X7R 10%	Manufacturers: KEMET	RFQ

Related keywords for C1210X333M4HACAUTO

KEMET C1210X333M4HACAUTO	C1210X333M4HACAUTO distributor	C1210X333M4HACAUTO supplier	C1210X333M4HACAUTO price
C1210X333M4HACAUTO download datasheet	C1210X333M4HACAUTO datasheet	C1210X333M4HACAUTO stock	buy C1210X333M4HACAUTO
KEMET C1210X333M4HACAUTO	Kemet [MIL] C1210X333M4HACAUTO		